



PlyClad F7 Structural Cladding

bbi PlyClad F7 Structural Cladding is manufactured from Radiata Pine using a Super E0 WBP A Bond Exterior Phenol-Formaldehyde glue and tested to the New Zealand Structural Plywood Standard AS/NZS 2269, giving you the assurance of structural integrity and comfort of knowing that it has been designed specifically for New Zealand conditions.

PlyClad is available in two grades, CD and BC. CD is available grooved, with a bandsawn face. Grooves are 9 x 6 mm groove at 150 mm centres across the sheet. PlyClad is available either Untreated, H3.1 LOSP Treated or H3.2 treated. Cut panels must be coated on the cut edge with a brush on timber preservative following the relevant manufacturers guidelines.

When painting or staining PlyClad, using colours with an LRV of 50% or less and/or failure to properly maintain the coating increases the risk of surface checking and blemishes

All fasteners used must be corrosion resistant to the appropriate specification level depending on the end use; a life expectancy of 15 to 50 years should be considered.

PlyClad is suitable for sheds, barns, farm buildings, tiny homes, cabins, wall linings, and general industrial cladding applications.

As PlyClad is a natural wooden product it can have surface checking and surface blemishes as it interacts with environmental factors such as moisture, wind, and sunlight. Because of this we do not recommend plywood cladding to be used in residential houses or commercial buildings where a high quality surface finish is required.



bbi PlyClad F7 Structural Cladding BC

Sheet Size	Thickness
2440 x 1200 mm	12 mm

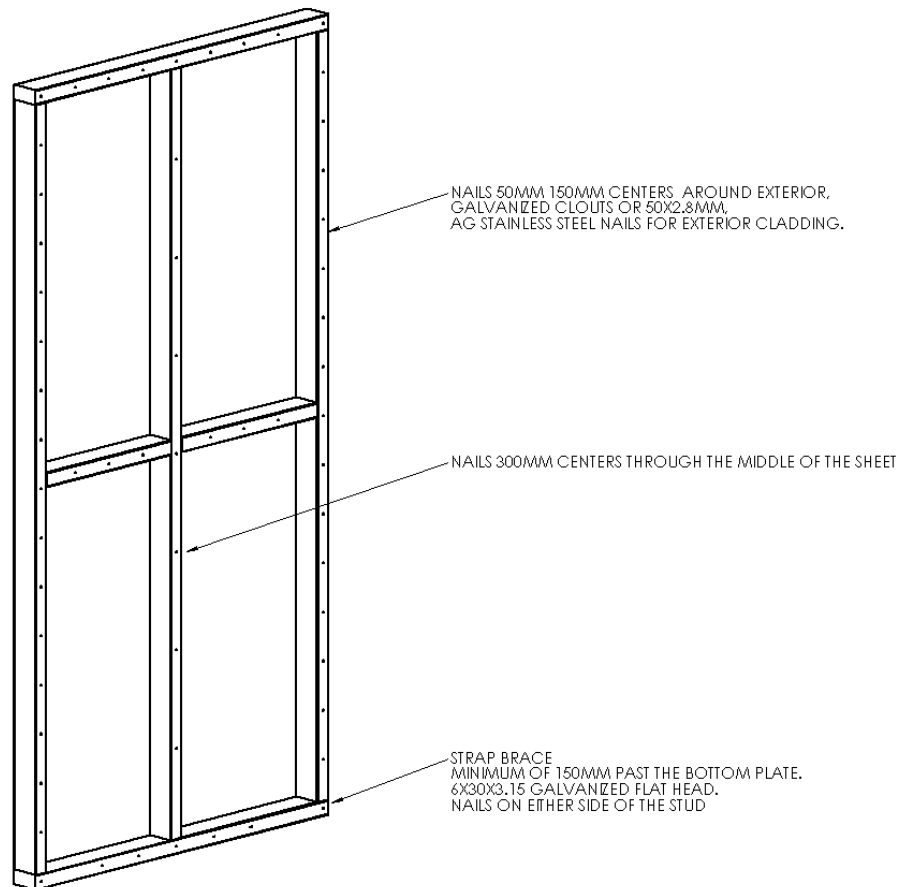
bbi PlyClad F7 Structural Cladding CD

Sheet Size	Thickness
2440 x 1200 mm	12 mm

bbi PlyClad Batten

Size	Length
50 x 25 mm	Random
75 x 25 mm	Random

Bracing Layout



Bracing Ratings

Arauco Code	Min Wall Length	Plywood Thickness	Max Stud Spacing	Wind*		Earthquake**	
	mm	mm	mm	BU/m	kN	BU/m	kN
AP1	1,200	6.5	600	130	7	132	6.6
AP2	1,200	7	600	142	7	144	7.2
AP3	1,200	12 Grooved	600	123	6	132	6.6

Notes: 20 bracing units = 1kN.

* As limited by the serviceability load capacity.

** As limited by the ultimate load capacity